



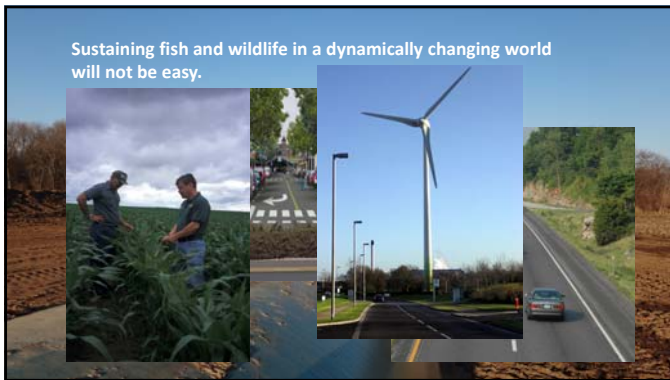
Every conservation agency, organization or collaborative across the nation should focus on landscapes valuable to plants, fish and wildlife.

The landscape continues to **CHANGE**




The fish and wildlife products are different now and will be **different in the future.**

Sustaining fish and wildlife in a dynamically changing world will not be easy.



Prediction: The landscape of 30 years from now will be less valuable to native plants, fish and wildlife than the current landscape.

Challenge: Do everything we can do to make that prediction wrong.



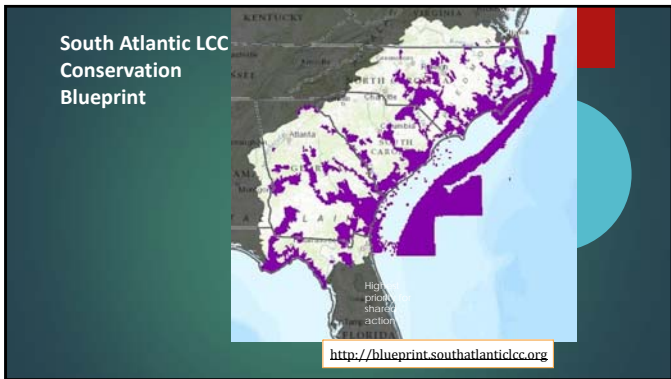
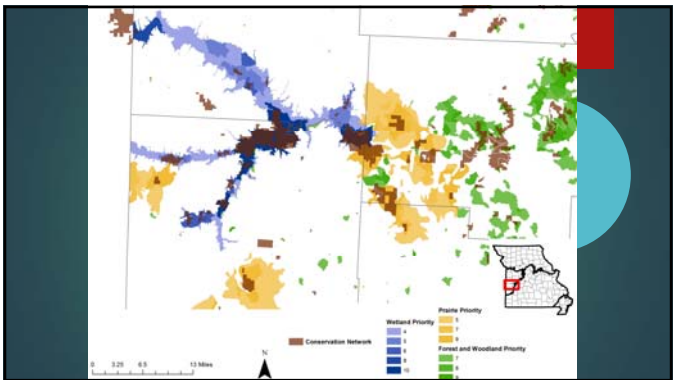
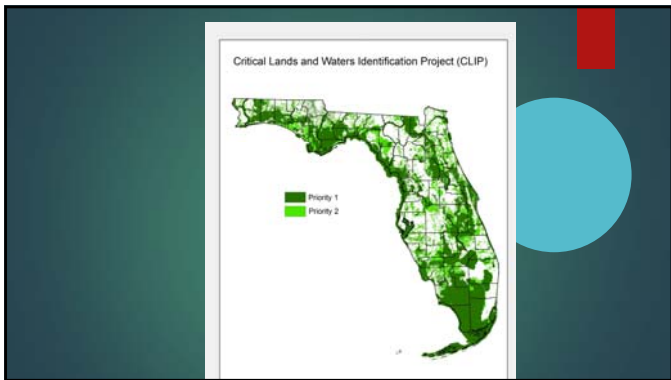
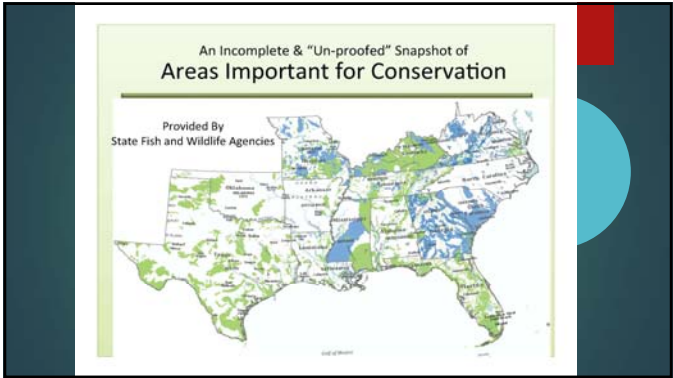
Southeast Conservation Adaptation Strategy

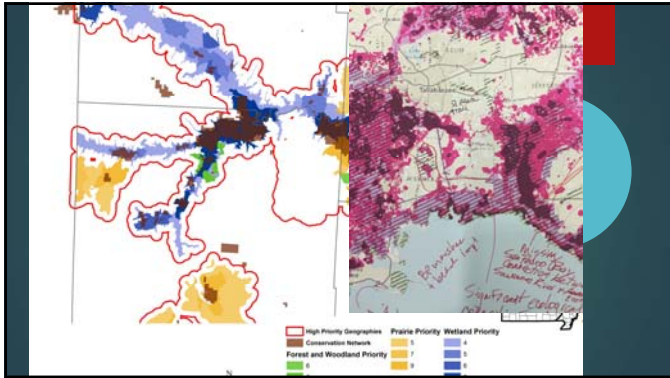
Southeast Natural Resource Leaders Group
Southeast Association of Fish and Wildlife Agencies



Can we assemble an ecologically connected network of landscapes and seascapes?
..... the conservation **blueprint**







LANDSCAPE SCALE CONSERVATION

If we want conservation landscapes that support healthy plants, fish and wildlife into the future

we have to identify them, NOW,
 describe them, NOW,
 invest in them, NOW.

..... and be ready to respond adaptively to landscape change

- individually
- collectively

..... the conservation **blueprint**

We are working from an ecologically connected network of landscapes and seascapes.

Landscape-scale conservation investing

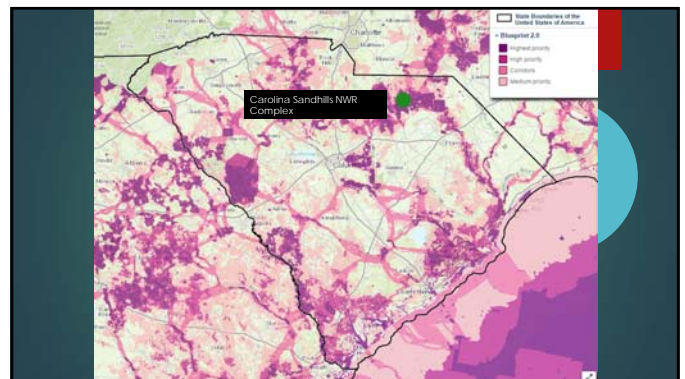
Highest and high priority areas in blueprint 1.0 and the Cohesive Wildland Fire strategy...

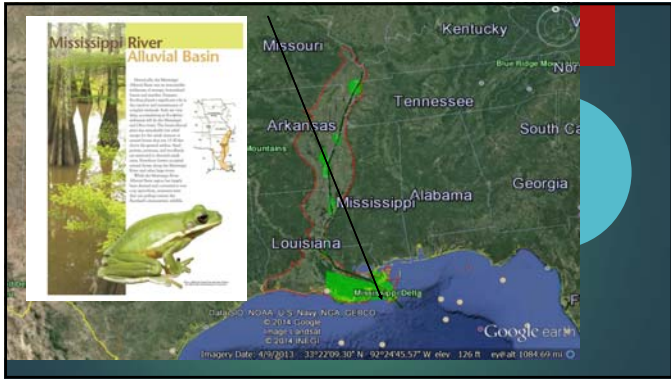
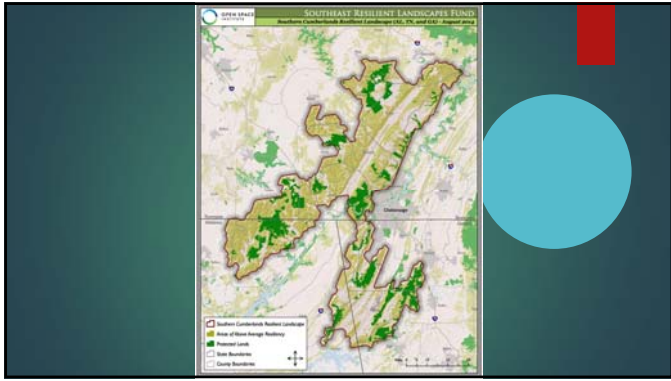
...in the pine, woodland, savanna and prairie ecosystem...

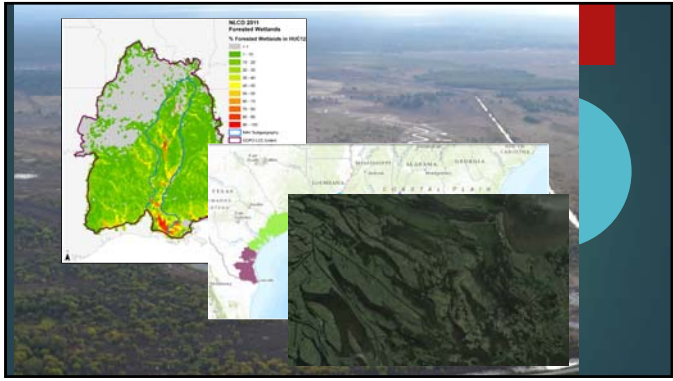
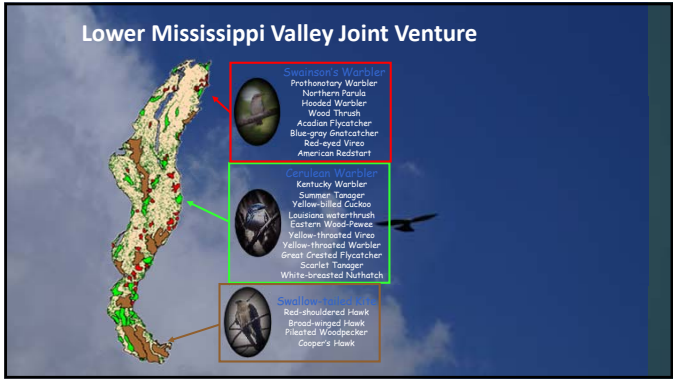
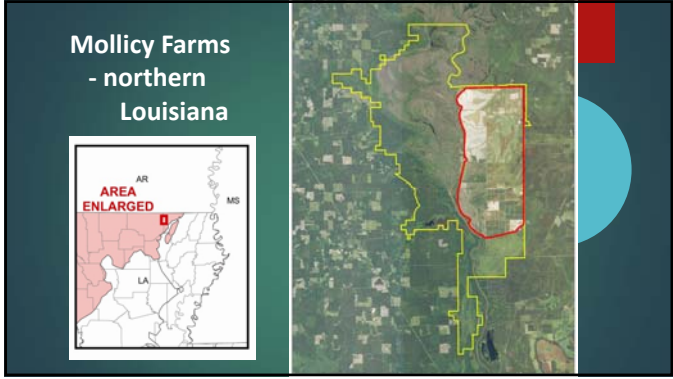
...within a 3-hour drive of refuges and parks with longleaf pine.

Conservation Blueprint brings in new implementation dollars

- \$770,000 for staff and aerial support this year
- Prescribed burning to increase resilience of fire-adapted longleaf pine ecosystem
- Supporting fire on private, state, and federal lands









Caribbean LCC - Puerto Rico

Guanica Forest Reserve: The winter bird community has exhibited dramatic declines, with constant-effort mist netting now capturing about one-third as many birds as it did 20 years ago the three most common species have declined dramatically.



National Fish, Wildlife, and Plants Climate Adaptation Strategy

National Goal - Conserve habitat to support healthy fish, wildlife, and plant populations and ecosystem functions in a changing climate.

National Fish, Wildlife, and Plants Climate Adaptation Strategy

Strategy 1.1: Identify a network of lands and waters for fish and wildlife. Identify areas for an ecologically-connected network resilient to climate change and to support a broad range of fish, wildlife, and plants under changed conditions.

